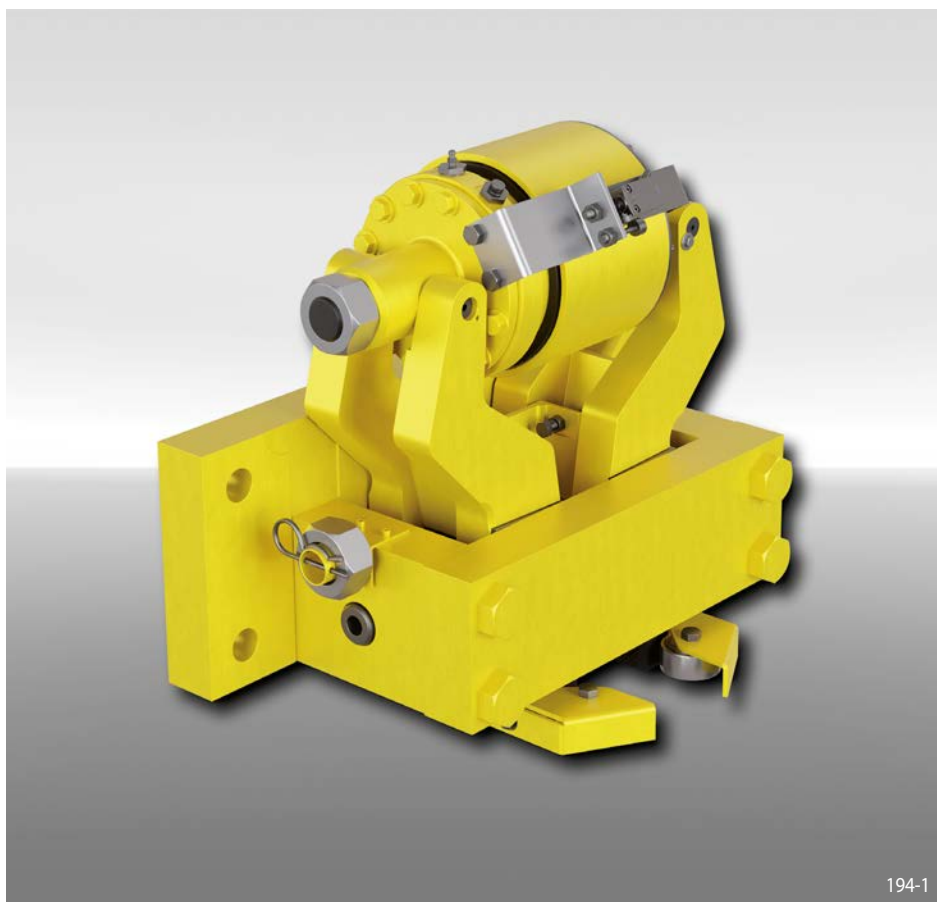


Rail Clamp DR 085 FHK

spring activated – hydraulically released



194-1

Features	Code
Clamp	D
Rail	R
Frame size 085	085
Spring activated	F
Hydraulically released	H
No adjustment to accommodate friction block wear	K
Max. braking forces for holding of 50 kN, 100 kN, 200 kN, 300 kN or 400 kN	050 to 400
Thruster mounted in central position	M
Clamping jaws are available for rail profiles A55, A65, A75, A100, A120 or 60E1	A55 A65 A75 A100 A120 60E1

Technical Data

	Rail Clamp DR 085 FHK				
	with braking force 050	with braking force 100	with braking force 200	with braking force 300	with braking force 400
Braking force	50 kN	100 kN	200 kN	300kN	400 kN
Nominal pad gap (total)	3 mm	3 mm	2,5 mm	2 mm	1,6 mm
Oil pressure	min. 110 bar max. 130 bar	min. 110 bar max. 130 bar	min. 105 bar max. 130 bar	min. 105 bar max. 130 bar	min. 115 bar max. 130 bar
Oil volume	max. 80 cm ³	max. 80 cm ³	max. 220 cm ³	max. 220 cm ³	max. 220 cm ³
Weight	210 kg	210 kg	238 kg	238 kg	238 kg

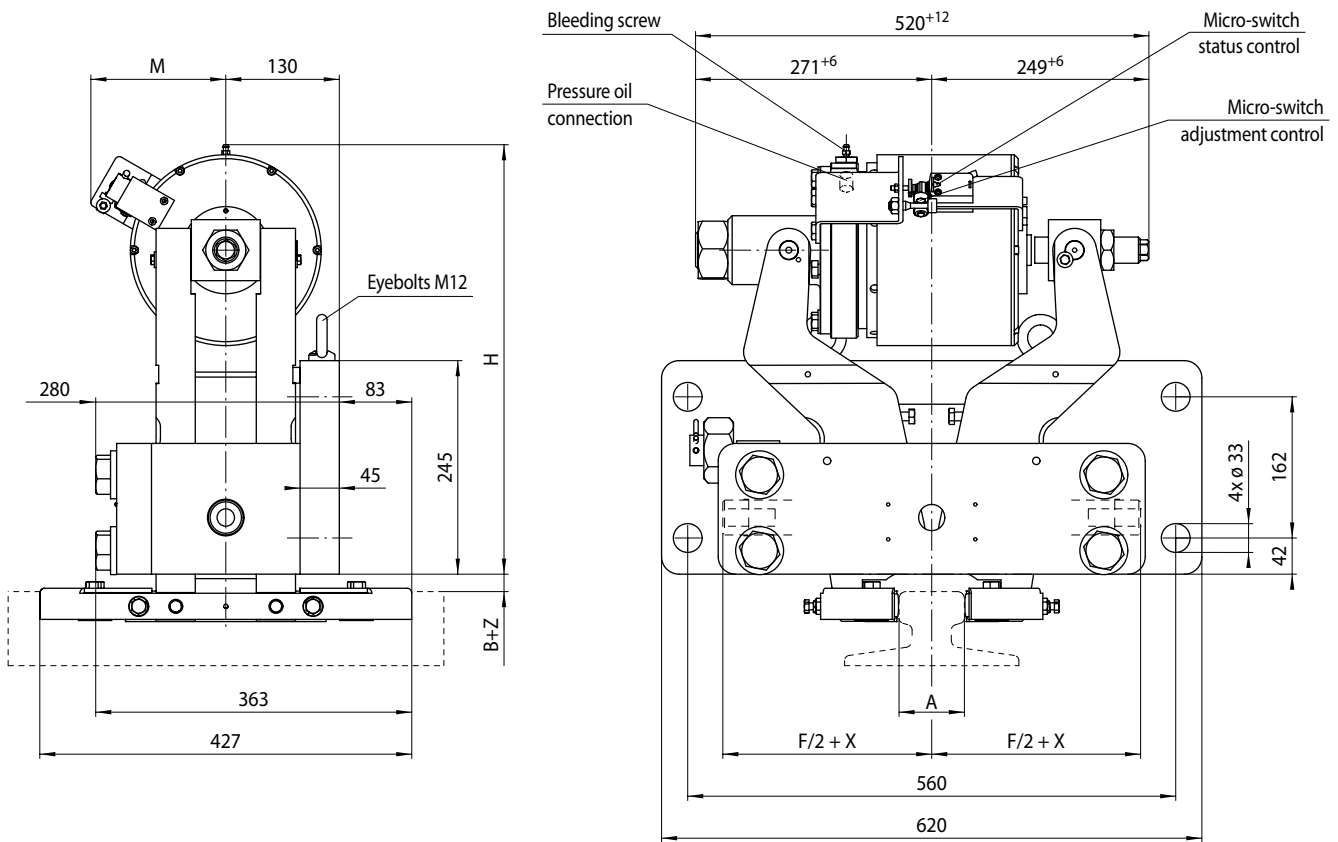
Example for ordering

Rail Clamp DR 085 FHK, max. braking force 100 kN, thruster mounted in central position and rail profile A55:

DR 085 FHK-100 M-A55

Rail Clamp DR 085 FHK

spring activated – hydraulically released



Rail Clamp	M	H	Pressure oil connection
	mm	mm	
DR 085 FHK-050	94	483	1/4"
DR 085 FHK-100	94	483	1/4"
DR 085 FHK-200	155	493	3/8"
DR 085 FHK-300	155	493	3/8"
DR 085 FHK-400	155	493	3/8"

Rail profile	A	B	F	X	Z
	mm	mm	mm	mm	mm
A55	55	25	479,5	+/-30	+1/-3
A65	65	20	479,5	+/-30	+/-4
A75	75	20	479,5	+/-30	+2/-5
A100	100	15	486,0	+/-20	+/-5
A120	120	15	486,0	+/-20	+/-5
60E1	72	15	479,5	+/-30	+2/-5

195-1

Working conditions

- Ambient temperature: -20 °C / +40 °C
- Air humidity: <90%

Monitoring switch

- 240 VAC 1.5 A; 250 VDC 0.1 A
- Cable 5 x 0.75 mm², length 2 m, outer diameter 7.5 mm
- Protection type IP67

Options

- Protection cover
- Integrated Hydraulic Power Unit
- Offshore certifications
- Seawater execution
- Flat pads for dynamic braking

Notes

- Eyebolts included
- Fastening:
4 screws M30, class 10.9 with tightening torque 1 515 Nm ± 5% μ 0.10 (not supplied)